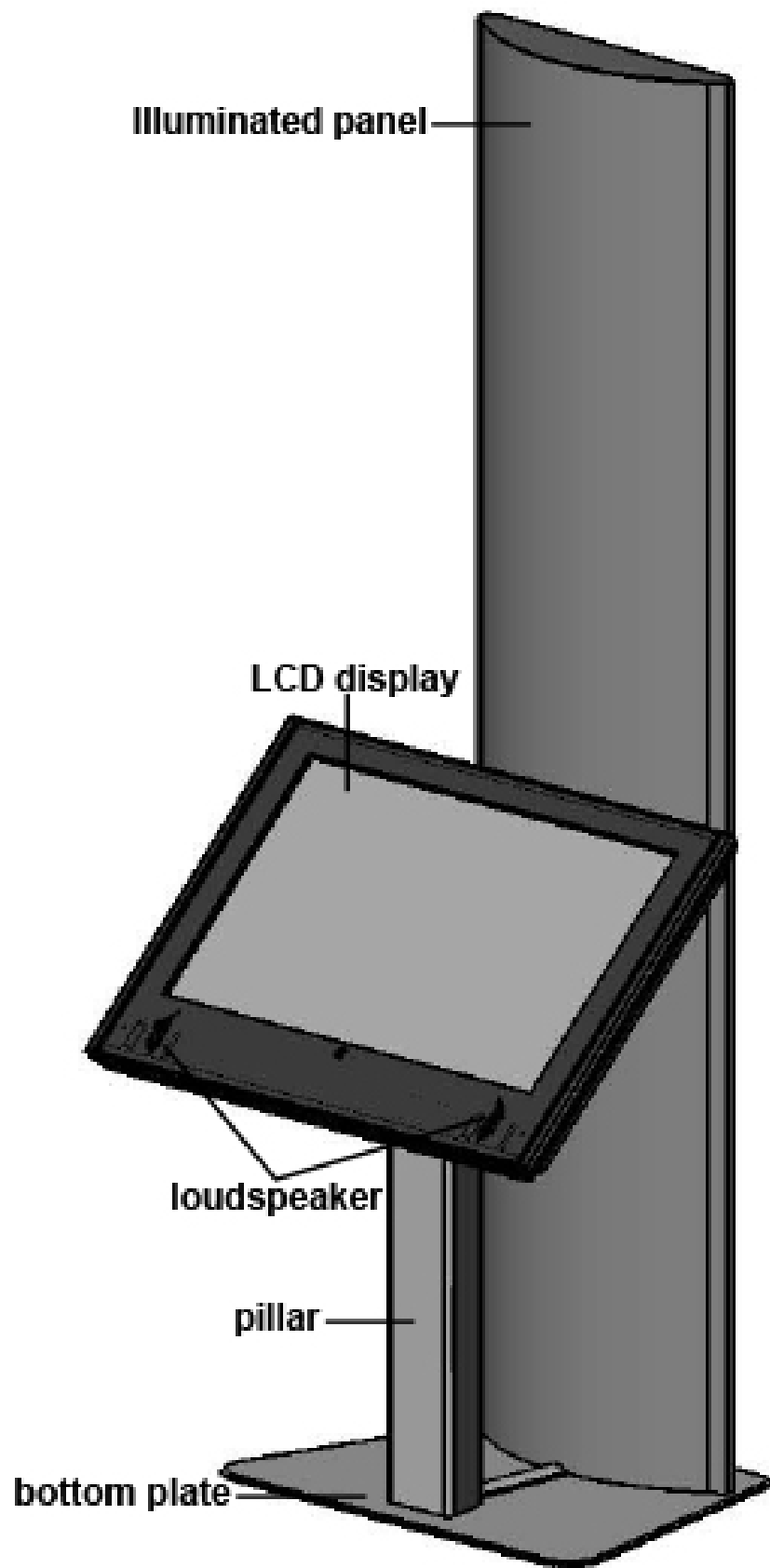


friendlyway luminum Operation Manual





1. Introduction	4
1.1. Description of the product	4
1.2. On the structure and content of this manual	4
2. Important information	5
2.1. Warnings, safety measures and ergonomics	5
2.2. Information on care and upkeep.....	6
2.3. Transportation.....	6
3. Mounting and requirements for the surrounding area.....	7
3.1. Requirements for the surrounding area	7
3.2. Terminal assembling	7
3.3. Mounting	8
4. Connecting the unit and placing it in service	9
4.1. Connecting terminal to the power supply	9
4.2. Connecting to the network and ISDN / modem	9
4.3. Placing the PC in operation	9
5. Display settings	10
5.1. OSD control buttons and their functions.....	10
5.2. On-Screen- (OSD).....	11
6. Variants and accessories	15
7. Troubleshooting	15
8. Technical specifications	16
9. Warranty	18
10. Declaration of conformity	20

1. Introduction

1.1. Description of the product

The friendlyway luminum is an interactive communication terminal for use in enclosed areas. Along with a basic model many variants for special application purposes are available, as well as comprehensive accessories. Please read this manual carefully before placing your terminal in service to avoid improper operation. Be especially sure to read chapter "Warnings, safety measures and ergonomics". This will help to prevent possible damage to the unit and injury to persons due to improper handling.

Subject to technical changes.

1.2. On the structure and content of this manual

The subject-matter of this manual is the friendlyway luminum in its basic model equipped with a multimedia PC and LCD display. If you need some information to special facilities of separate device variants or to other accessories, please refer to respective documentation. This document describes how to set up and start up your terminal, what settings are available on the monitor, and how to conduct routine maintenance. For operation and maintenance of the welcome no specific knowledge (computing, electronics, etc) is required. Otherwise, it is explicitly indicated in the manual.



Danger of electric shock. Before you disassemble the PC, turn the terminal off and pull the power cord.

Warning intended to prevent injury to persons or damage to property



Service and upgrade tasks on the PC may only be performed by trained, professional staff members

Useful information



Connect the device to the power supply with the power connection cord. The device is ready for operation.

Individual instruction

1. Make the corresponding drill hole in the floor.
2. Install the terminal on the desired place.
3. Screw the bottom plate to the floor.

Step-by-step instructions

2. Important information

2.1. Warnings, safety measures and ergonomics



When setting up the unit and before placing it in service, please make note of the information in chapter "Mounting and requirements for the surrounding area".

- Transport the unit only in its original packaging or in a suitable packaging that ensures it is protected against bumps and impact.
- If the unit is brought from a cold environment into the room where it will be operated, condensation may occur. Wait until the unit has reached the temperature of the room and is completely dry before putting it in operation.
- Make sure that the local power supply does not exceed or fall short of the nominal voltage range. Check the adjusted nominal voltage of the unit (see "Connecting terminal to the power supply" and see the identification plate).
- A safety-tested power line in compliance with the requirements of the country where it is being used is required for this device. The device can only be connected to a grounded protected contact socket.
- Make sure that the socket of the device or the protected contact socket of the facility installation is freely accessible.
- Lay the lines so that they do not create any hazards (danger of tripping) and so that they cannot be damaged. Read chapter "Connecting the unit and placing it in service" of these operating instruction on connecting the device.
- Repairs on the device may only be performed by authorized specialists. Unauthorized opening or improper repairs may result in considerable hazard for the user (electric shock, danger of fire).
- Proper operation of the device, (as per IEC 950/EN60950) is only ensured if the housing is fully assembled and the rear side covers for installation locations are in place (electric shock, cooling, fire protection, radio interference).
- Before opening the device, the device must be disconnected from the power supply by removing the power plug. Follow the instructions and information in these operating instructions if you open the device.
- Install only system add-ons that comply with the requirements and specifications for safety, electro-magnetic compatibility and telecommunications terminal device equipment. Installing other add-ons may violate these requirements and specifications or may damage the system.
You can obtain information about which system add-ons are permissible for installation from your sales center or from our service department. You can obtain information about which system add-ons are permissible for installation from your sales center or from our service department.
- If you install or replace system add-ons that cause defects to the device, the warranty is voided.
- The weight of the device is ca. 70 kg, depending on the configuration.
- To obtain sufficient stability it is required that the terminal is screwed to the floor with mounting bolts on special openings in the bottom plate.
- If the unit keeps displaying the same pattern for a long period of time the image may be „stuck“ to the screen. To avoid image sticking it is recommended to use alternating or animated images or a screensaver. Please see also the display manufacturer's directions.
- Keep this information on hand along with all of the documentation together with the unit. If you transfer the unit to a third party, please transfer all of the documentation along with it.
- Data lines to peripheral devices must be equipped with adequate shielding.
- If your device is equipped with a DVD-ROM drive, the following applies:
The DVD-ROM drive contains a light-emitting diode (LED), classification in accordance with IEC 825-1:1993:LASER CLASS 1.
- You will find additional safety information in the respective manuals for PC and other accessories or installation devices (if ordered in addition).

2.2. Information on care and upkeep

Housing

- ALUMINIUM VERSION: Do not clean with sharp objects, for example, metal sponge or similar cleaning objects! Clean only with a damp cloth and gentle cleaning agents. Do not directly spray cleanser onto the unit.

Be careful with such optional devices as loudspeaker, camera and card reader.

Screen

- Clean with standard window cleansers. To prevent exposure to moisture, do not directly spray cleanser onto the device. Instead of this, wipe off the screen with a moist cloth.

2.3. Transportation

Transport your friendlyway luminum in the original package only or in other special transportation boxes. There are two options:

- reusable sturdy shipping container (ground transportation)
- reusable extremely sturdy flight case (air transportation)

3. Mounting and requirements for the surrounding area

3.1. Requirements for the surrounding area

Your friendlyway classic was specially developed for use in enclosed areas and has specific requirements for the surrounding area:

- Permissible ambient temperature: 15 - 30°C
- No sources of warmth or heat (direct sunlight, heater) in the immediate vicinity, no direct effects of heat.
- No high relative humidity



The machine must only be operated under the environmental conditions listed above. Please take this into consideration when selecting a place to set up the device.

3.2. Terminal assembling

Illuminated panel with 4 counter-sunk screws M6x20 at the bottom.



Place the stand on 4 stud bolts of the bottom plate and mount it with 4 screw nuts M8 and 4 spring rings.



Mount the terminal on the stand so that the stud bolts fall into the designated openings, and screw it with 8 screw nuts M8 from the back.

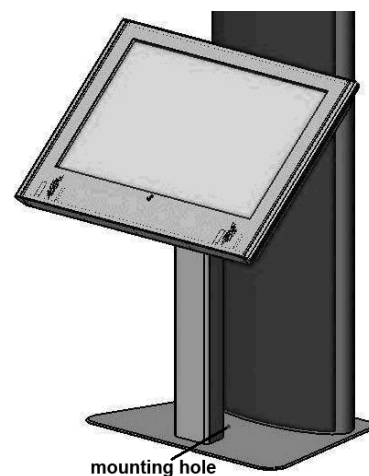


3.3. Mounting

To prevent the terminal breakdown due to external impact (counterpressure, vandalism, etc.), the terminal must be screwed to the floor. On the bottom plate there is an opening for the mounting bolt.

To mount the terminal to the floor:

1. Make the corresponding drill hole in the floor.
2. Install the terminal on the desired place.
3. Screw the bottom plate to the floor.



4. Connecting the unit and placing it in service

On the back side of the device there is a PC cap screwed to the cover with two bolts. By unscrewing the both bolts and replacing the cap you can get free access to PC ports/interfaces (LAN, ISDN, Modem, etc.). Cables are lead through a gap between the cap and the cover.



Lay the connection cable so that no one can walk on it or trip over it.

4.1. Connecting terminal to the power supply



You should only operate the device from a grounded alternating current socket for a 220-240 V / 50 Hz power supply.



Connection:

Connect the device to the power supply with the power connection cord.

The device is ready for operation.

4.2. Connecting to the network and ISDN / modem

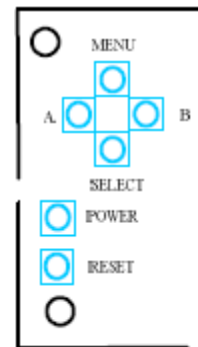
The network and ISDN / modem connection requires a trained staff that is also capable of making the required communication settings.

4.3. Placing the PC in operation

The PC is located under the PC cap that is screwed to the back panel with two bolts. Unscrew the both bolts and replace the cap to get access to the ports. The system is preinstalled and the device is started with the ordered accessory units.

5. Display settings

The terminals are preconfigured so that there is no need to set up anything under the normal conditions. If you want to change some display settings, enter the On-Screen-Display (OSD) that is called and controlled with buttons on the back panel. OSD embraces all display settings, and you can easily reach any function that must be set up.



To avoid screen burn effects (image sticking), a screensaver or an image that moves across the whole display must be obligatory displayed!

To reach optimal quality and position of the picture, autoadjustment should be performed.

To ease the setup on the OSD menu, the timeout parameter can be set to maximum.

5.1. OSD control buttons and their functions

Key	Function
POWER	Switch power On / Off
RESET	Reset to the last saved state

The four buttons of the OSD control can either be used to navigate within the OSD or to access various functions directly. The following two tables give you an overview about the functionality.

Functionality while OSD is closed:

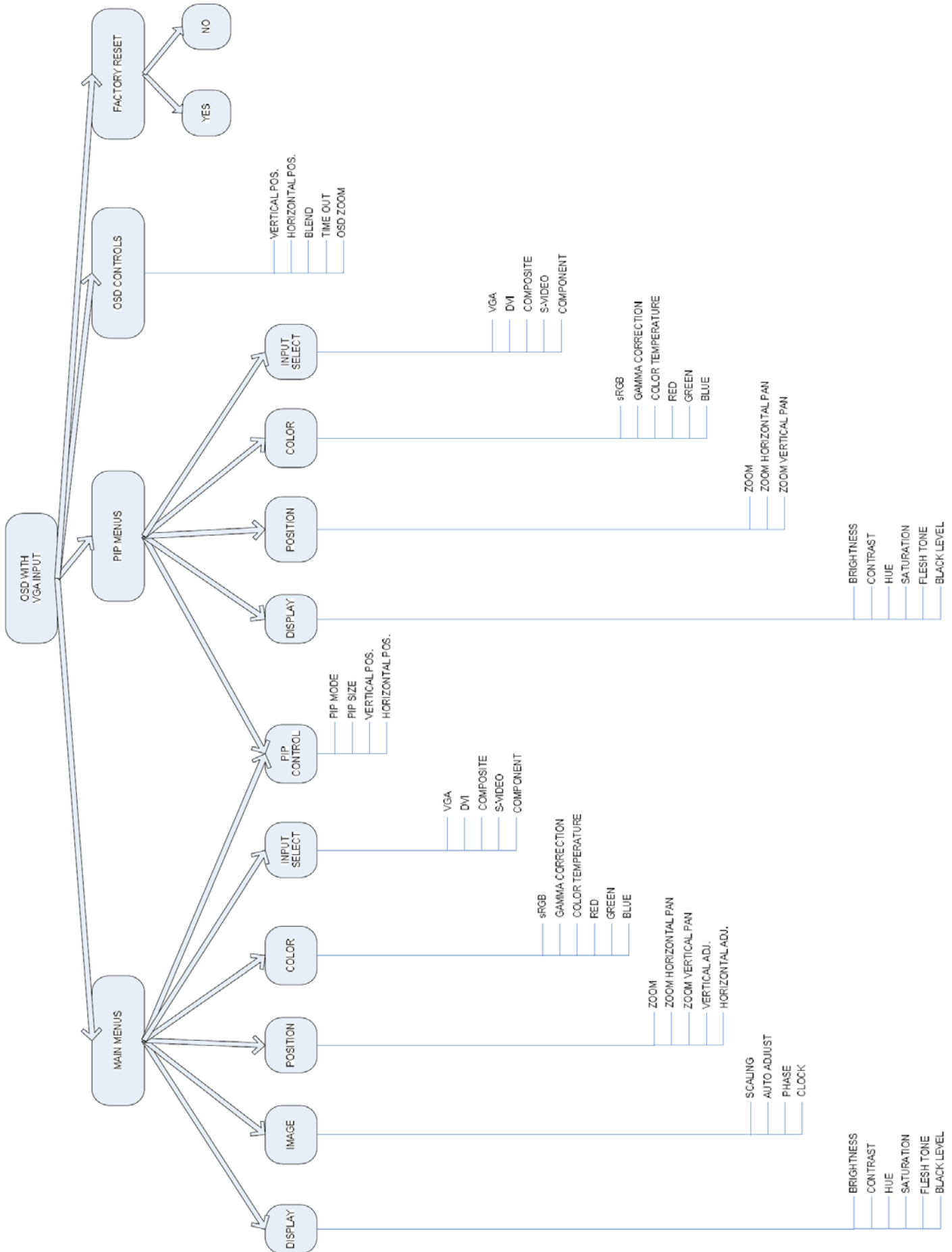
Key	Function	Note
MENU	Enter the OSD main menu	
SELECT	Switch the input port	Sequence is RGB, DVI, CVBS, S-Video, Component Video, RGB+CS
A	Decrease brightness	
B	Increase brightness	

Functionality while OSD is open:

Key	Function	Note
MENU	Leave the OSD main menu Leave submenu	
SELECT	Enter submenu	
	Select color	In color submenu
A	Select previous menu item	In main menu or in submenu
	Move picture to the left	In H-Position submenu
	Move picture up	In V-Position submenu
	Decrease slider value	
	Toggle On/Off	
B	Select next menu item	In main menu or in submenu
	Move picture to the right	In H-Position submenu
	Move picture down	In V-Position submenu
	Increase slider value	
	Toggle On/Off	

5.2. On-Screen- (OSD)

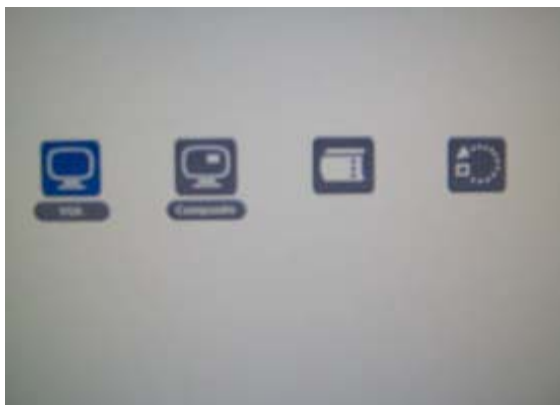
5.2.1. Hierarchical Overview for the VGA Mode



5.2.2. Window Structure

OSD Start Menu

The main menu consists of the main input symbol, the PIP symbol, the OSD setting symbol, and factory autoreset symbol. By choosing one and pressing Enter, the submenus will be displayed.



Main menu

This menu is used to control the functions associated with the main input of choice. The main display consists of the following submenus: *Display*, *Image*, *Position*, *Color*, *PIP Control* and *Input Select*.



OSD control menu



Vertical: This slider moves the OSD left/right across the screen.

Horizontal: This slider moves the OSD up/down across the screen.

Blend: This slider sets the amount of blending of OSD into the background.

Time out: This slider sets the time, in seconds, in which the inactive OSD will shut itself down.

OSD Zoom: Enables and disables zooming into the OSD.

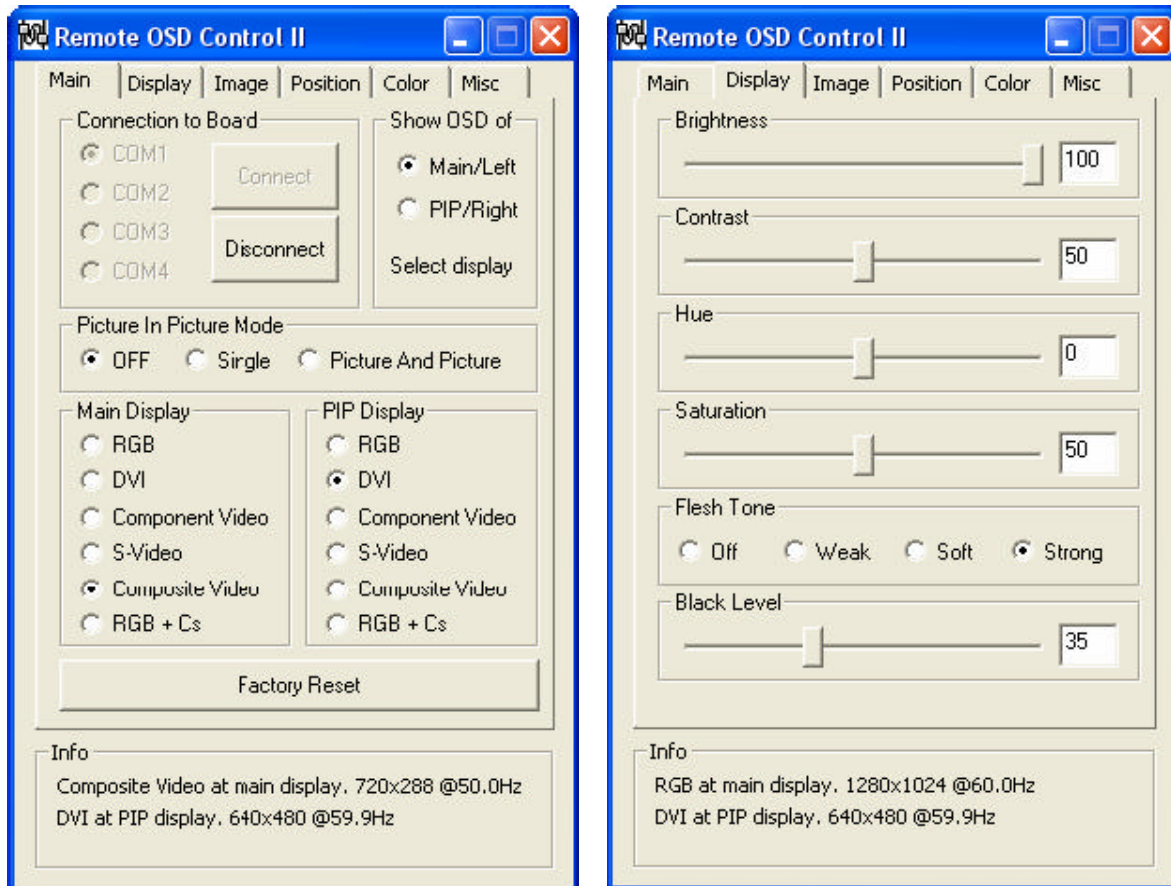
Factory Reset



By selecting Yes and pressing Enter, the user can reload the factory settings. All settings previously set by the user will be lost.

5.2.3 Remote OSD Control

The RGB/Video Converter Board used in the terminal can also be controlled by a remote computer, through a serial port, with an RS232 cable connection. All OSD functions can be used this way, with the additional feature of creating and saving multiple personal settings.



6. Variants and accessories

Your friendlyway luminum terminal is offered as a basic model and in several variants. These variants differ in basic configuration of hardware and software aimed at specific application purpose. Additionally you can obtain extra accessories and combine them within the constructional possibilities. The device is configured at the factory after the order and no later upgrade of the terminal can be performed as a rule. If you have questions regarding the operation and maintenance of optional devices as well as special accessories, please refer to the respective manuals. You can acquire it in the attached list of Variants and accessories.

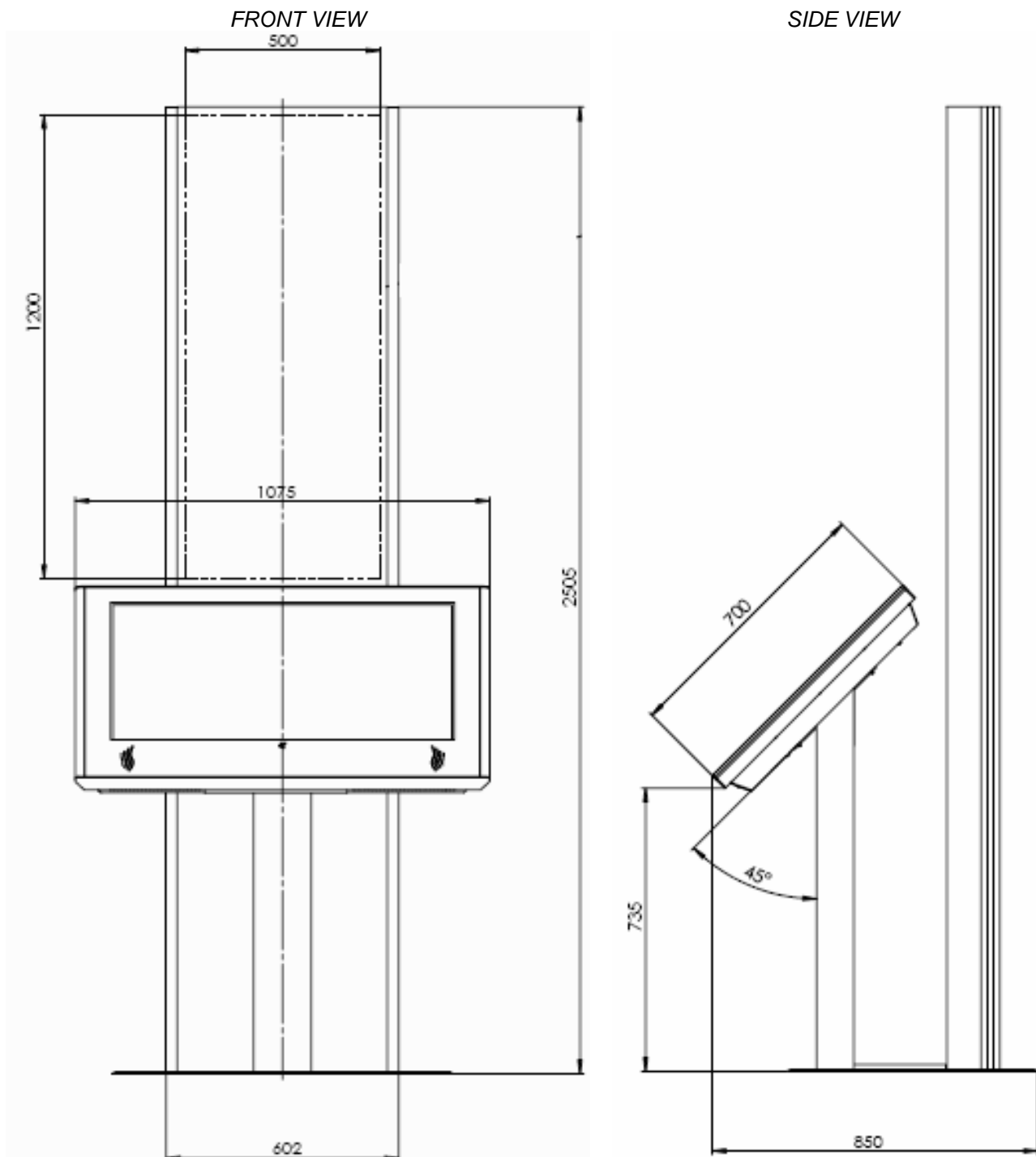
7. Troubleshooting

An up-to-date and comprehensive database of potential problems and their solutions can be found at our home page at the following website: www.customers.friendlyway.com.

Certain hints on troubleshooting and problem solving are also available in the corresponding manuals for components and accessories.

8. Technical specifications

Dimensions:	Please see the drawings below.
Weight:	70 kg, depending on the configuration
Housing:	Anodized aluminum
Ambient temperature:	permissible in the range 15 °C - 30 °C
Standard equipment:	40" LCD display, 2 built-in loudspeakers PC: Pentium M 1,1 GHz, 512 MB RAM, Windows XP Professional



9. Warranty

We offer a guarantee on all systems for a period of 12 months. During this time, *friendlyway* customer support is available to you daily from 9 a.m. till 5 p.m. We will be happy to assist you with any questions and problems.

You can reach us on our hotline at 1-800 374 36 35 (only in Germany) or at +49 (0) 89 / 95 97 91-500 or by e-mail at Support@friendlyway.com

We offer telephone support for troubleshooting and error correction. Repairs take place in our facility. If you require on-site assistance, travel costs will be billed according to the distance involved.

[illegible]

10. Declaration of conformity

CE

Declaration regarding conformity

This declaration applies to the products designated below:

Product: Terminal

Device type: Multimedia, representational Internet terminal

Model: luminum

This is to confirm that the products comply with the essential protection requirements stipulated in the regulations of the Council for adjustment of legal requirements of member states regarding electro-magnetic compatibility (89/336/EEC) as modified by 91/263/EEC, 92/31/EEC, 93/68/EEC as well as 93/97/EEC and the low voltage regulation 73/23/EEC as modified by 93/68/EEC.

This declaration is submitted by

**friendlyway AG
Feringastr. 9
85774 München-Unterföhring**

The relevant tests were performed at accredited testing laboratories.

The following standards were used to evaluate the products in terms of electro-magnetic compatibility and in terms of the low-voltage regulation:

EN 55 022: April 1998

EN 50 082-2: February 1996

(EN 61000-4-2:1995 +A1:1998 / EN 61000-4-3:1996 +A1:1998 / ENV 50204:1995 /
EN 61000-4-4:1995 / EN 61000-4-5:1995 / EN 61000-4-6:1996 / EN 61000-4-11:1994)
EN 60950:1992 / +A1:1993 / +A2:1993 / +A3:1995 / +A4:1997 / +A11:1997

Munich, August 21, 2000

Legally binding signature
of the distributor



Feringastr. 9
D-85774 München-Unterföhring
Tel.: +49 (0) 89 95 97 91 340
Fax: +49 (0) 89 95 97 91 40
e-mail: info@friendlyway.com
<http://www.friendlyway.com>



Service Hotline
Tel.: 0800 / 374 36 35
Tel.: +49 (0)89 / 95 97 91 500
e-mail: support@friendlyway.com



friendlyway®
Intelligent solutions for friendly communication